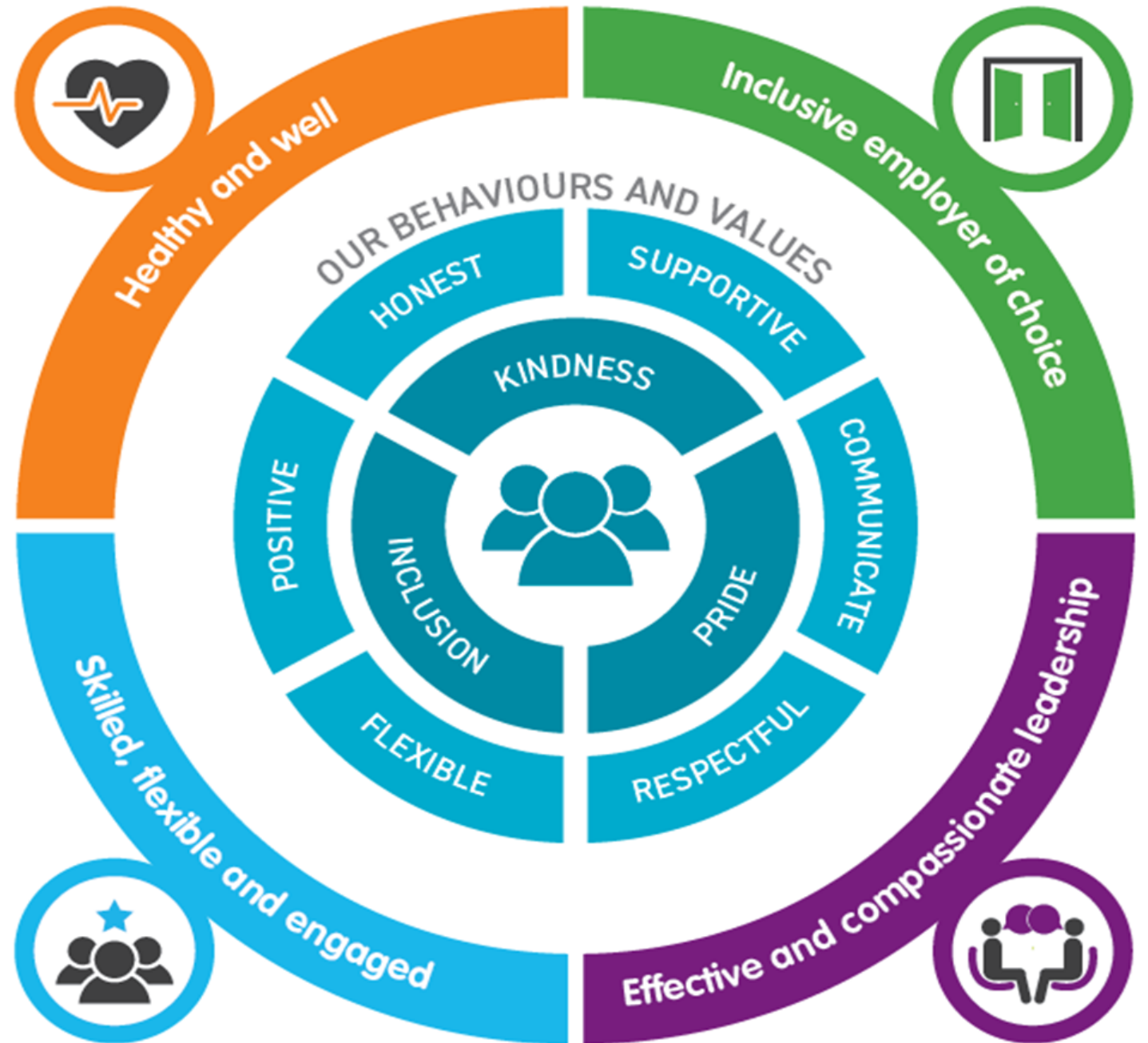


Our Vision

*We will achieve our
shared outcomes
through people with the
right skills, values and
behaviours working in
partnership in our places*

Our People Strategy



Our Pledges



Inclusive employer of choice

Our recruitment and selection processes are inclusive, safe, fair and straightforward.

You'll get a warm welcome whether you're new or moving jobs.

You'll know you are valued and are comfortable and confident being yourself.



Effective and compassionate leadership

Our leaders and managers are skilled and compassionate in their approach.

You'll know how to be the best you can be and how you're doing.



Skilled, flexible and engaged

There are opportunities to learn and develop that suit you and your job of today and tomorrow.

Wherever possible, we take a flexible first approach to when, how and where you work.

You'll know what's going on and we'll listen to what's important to you and how you're feeling.



Healthy and well

Your wellbeing is as important to us as it is to you.

Employee benefits support you as an individual.